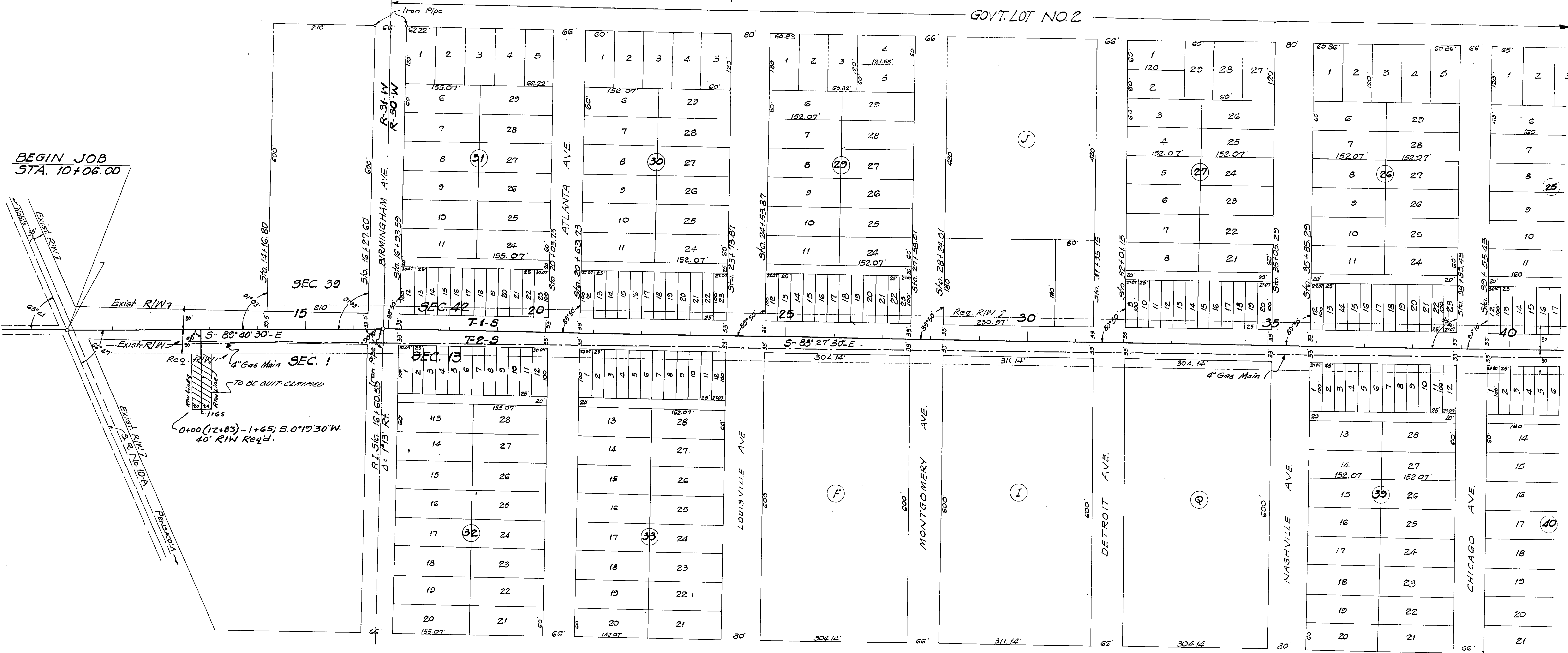


NOTE: FOR DETAILS ON SCALE 1" = 100' SEE SHEETS 2 THRU 6.

REQUIRED R/W WIDTH
50' Rt. & Lt. from Beginning of Job to Sta. 163+27.22

STATE OF FLORIDA STATE ROAD DEPARTMENT			
RIGHT OF WAY MAP			
SECTION No. 4861-152			
ROAD No. 5-296		ESCAMBIA COUNTY	
SCALE 1" = 1000'	NAMES	DATES	APPROVED BY
DRAWN	E.W.L.	9/5/55	<i>L. S. Durr</i> DIVISION ENGINEER
INDEXED			<i>J. M. Ope...</i> STATE HIGHWAY ENGINEER
REVISED		1-17-56	Deputy.

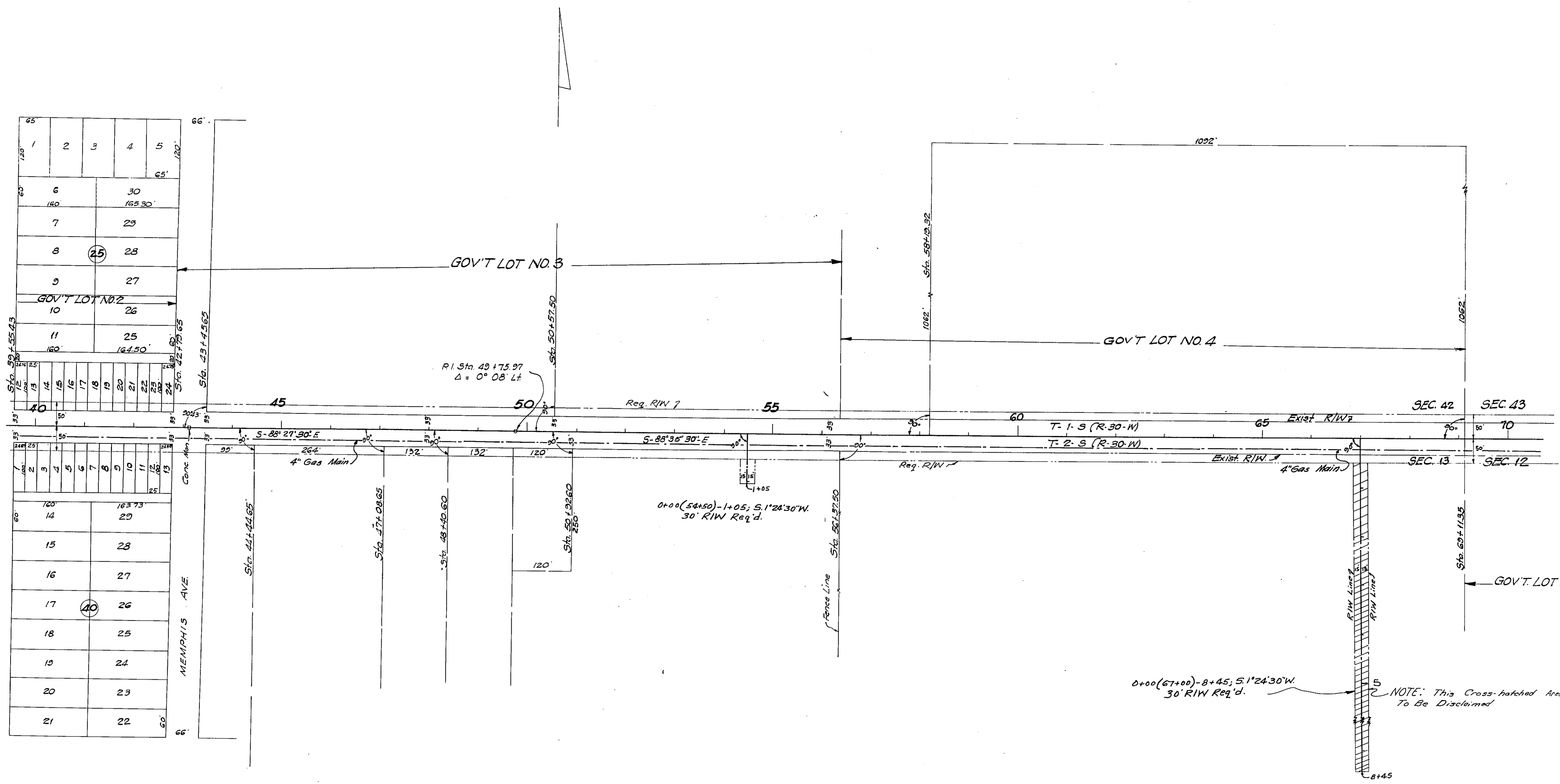


BEGIN JOB
STA. 10+06.00

4" Gas Main SEC. 1
TO BE OUIT CLAIMED
0+00 (12+83) - 1+65; S. 0° 19' 30" W.
40' RIW Reqd.

PENSACOLA HEIGHTS
RECORDED IN PLAT BOOK 1
PAGE 1 & PAGE 31
&
WEST PENSACOLA HEIGHTS
PLAT BOOK 2, PAGE 34

STATE OF FLORIDA STATE ROAD DEPARTMENT			
RIGHT OF WAY MAP			
SECTION No. 4861-152			
ROAD No. S-296		ESCAMBIA COUNTY	
SCALE 1" = 100'	NAMES	DATES	APPROVED BY
DRAWN			
TRACED	curdw.	7/6/53	<i>A. P. Reed</i> DIVISION ENGINEER
INDEXED			
REVISED	<i>Amr</i>	10-24-55	<i>J. M. Orentlich</i> STATE HIGHWAY ENGINEER
REVISED	<i>AM.W.P.H.</i>	11-2-55	<i>Dep't</i>



1	2	3	4	5
6	30			
7	29			
8	25			
9	27			
10	26			
11	25			

1	2	3	4	5	6	7	8	9	10	11	12	13
14	29											
15	28											
16	27											
17	26											
18	25											
19	24											
20	23											
21	22											

STATE OF FLORIDA
STATE ROAD DEPARTMENT

RIGHT OF WAY MAP

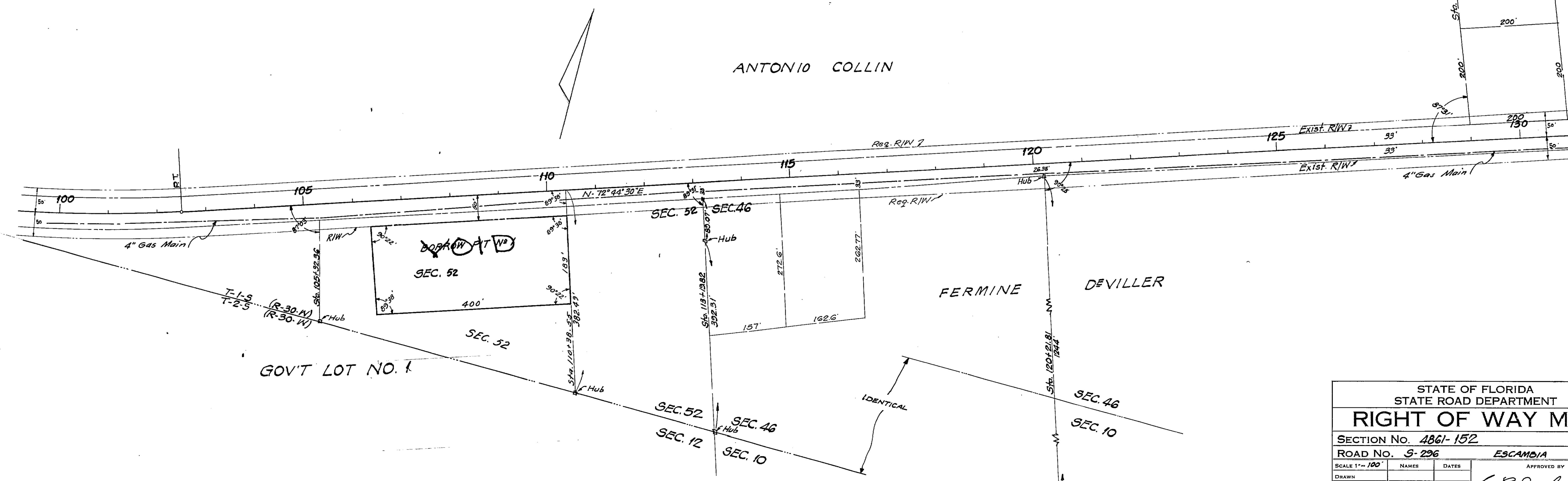
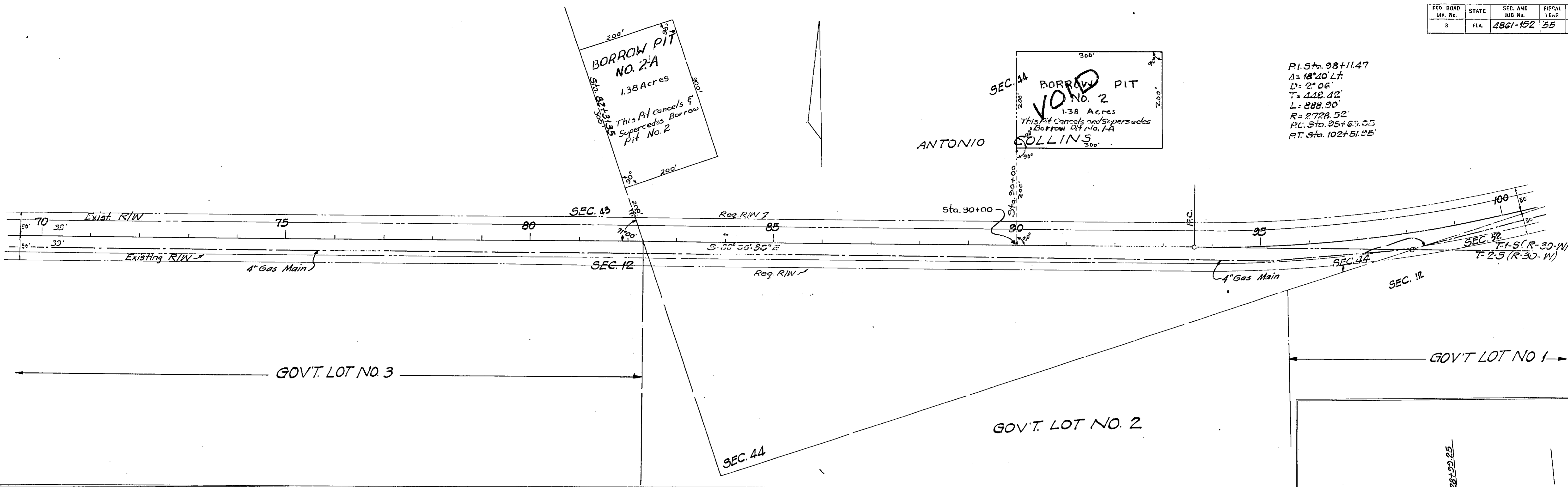
SECTION NO. 4861-152
ROAD NO. 5-296 ESCAMBIA COUNTY

SCALE 1"=100'	NAMES	DATES	APPROVED BY
DRAWN			
TRACED	WOW	7/6/55	
INDEXED			
REVISED	10-24-55		
REVISED	12-28-55		
REVISED	10-8-58		

FED. ROAD DIV. No.	STATE	SEC. AND JOB No.	FISCAL YEAR	SHEET No.	TOTAL SHEETS
3	FLA.	4861-152	55	4	6

146

P.I. Sta. 98+11.47
 $\Delta = 18^{\circ}40' Lt.$
 $D = 2^{\circ}06'$
 $T = 448.42'$
 $L = 888.90'$
 $R = 2728.52'$
P.C. Sta. 95+67.55
P.T. Sta. 102+51.95'

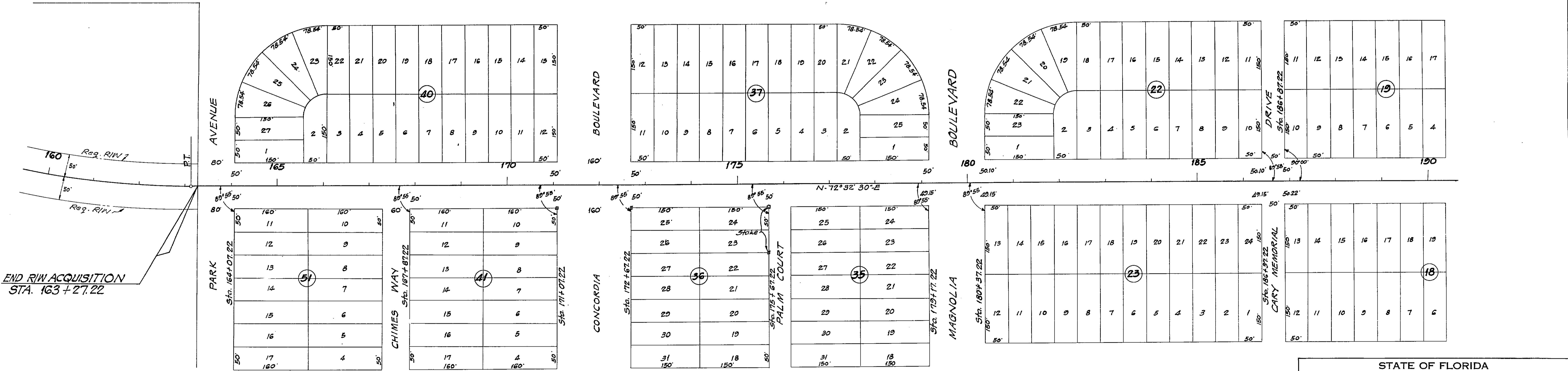
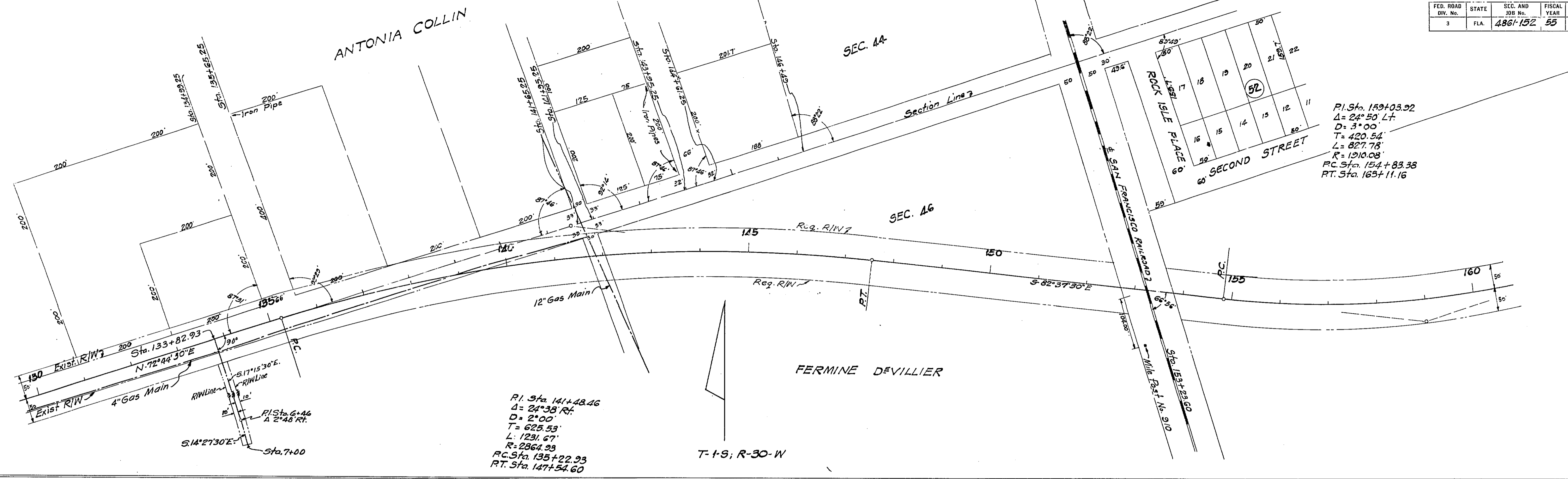


STATE OF FLORIDA
STATE ROAD DEPARTMENT
RIGHT OF WAY MAP
SECTION No. 4861-152
ROAD No. 5-296 ESCAMBOIA COUNTY

SCALE 1" = 100'	NAMES	DATES	APPROVED BY
DRAWN	W.D.W.	9/5/55	 DIVISION ENGINEER STATE HIGHWAY ENGINEER PROF.
TRACED			
INDEXED			
REVISED	H.K.C.	10-14-55	
REVISED	R.P.S.	5-7-56	

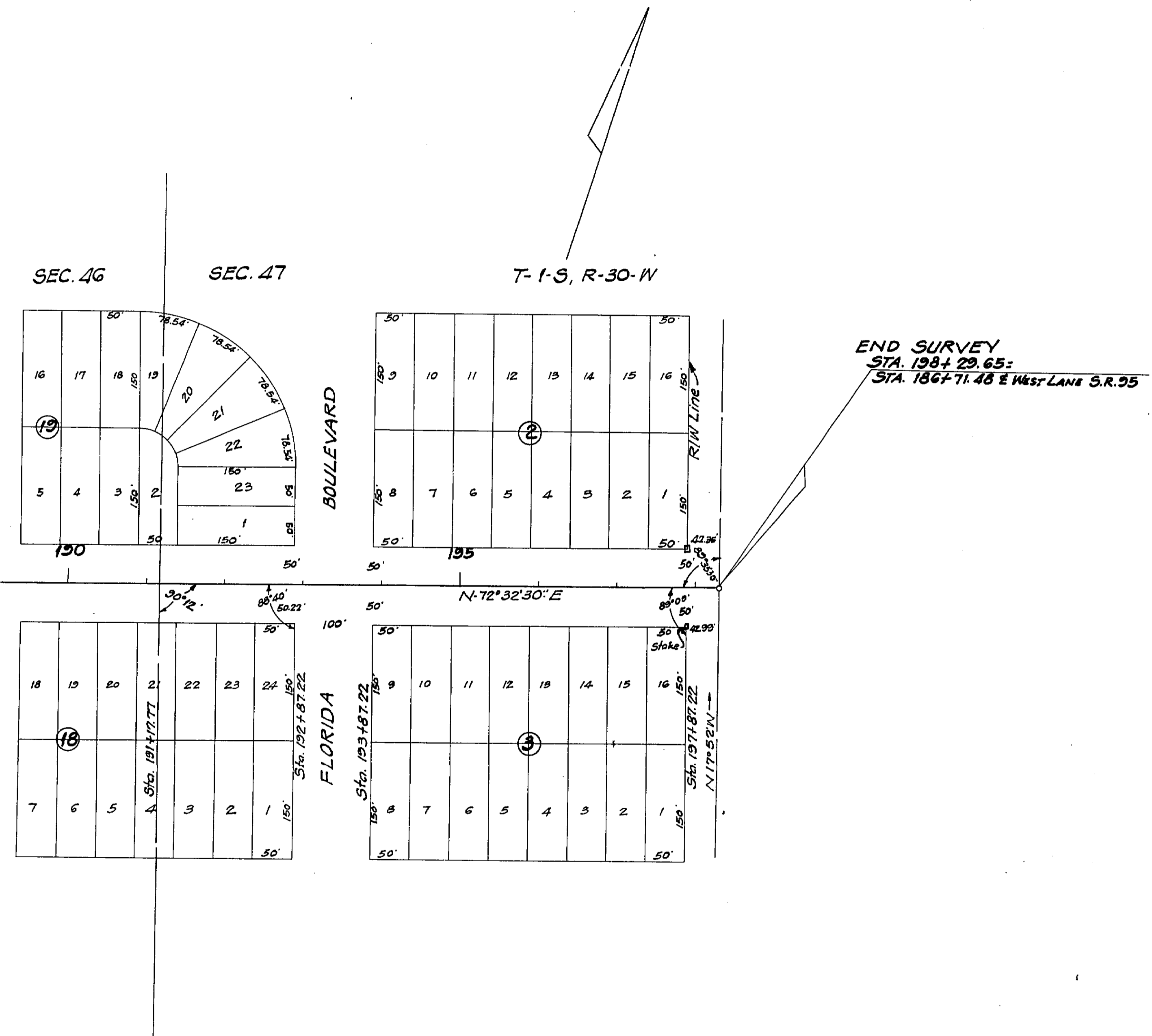
FED. ROAD DIV. No.	STATE	SEC. AND JOB No.	FISCAL YEAR	SHEET No.	TOTAL SHEETS
3	FLA.	4861-152	55	5	6

14.7



FERMINE DEVILLIER
 BRENTWOOD PARK
 PLAT BOOK 1, PAGE 11
 SEC. 46, T-1-S, R-30-W

STATE OF FLORIDA			
STATE ROAD DEPARTMENT			
RIGHT OF WAY MAP			
SECTION No. 4861-152			
ROAD No. 5-296 ESCAMBIA COUNTY			
SCALE 1" = 100'	NAMES	DATES	APPROVED BY
DRAWN	W.D.W.	9/5/55	<i>[Signature]</i>
TRACED	W.D.W.	3/5/55	
INDEXED			<i>[Signature]</i>
REVISED	H.C.	10-25-51	
REVISED	W.D.W.	7-16-56	STATE HIGHWAY ENGINEER



STATE OF FLORIDA STATE ROAD DEPARTMENT			
RIGHT OF WAY MAP			
SECTION No. 4861-152			
ROAD No. 5-296 ESCAMBIA COUNTY			
SCALE 1" = 100'	NAMES	DATES	APPROVED BY
DRAWN	W.W.	9/5/55	 L. P. Duff DIVISION ENGINEER STATE HIGHWAY ENGINEER REPUBLIC
TRACED	W.W.	9/5/55	
INDEXED			
REVISED			